

Juliantile / Alps





ALAL160 - Almond
12" x 24"
Sq. Ft.: \$6.95 – Pc. \$13.55



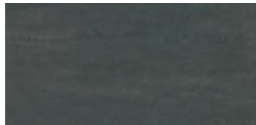
ALBE160 - Beige
12" x 24"
Sq. Ft.: \$6.95 – Pc. \$13.55



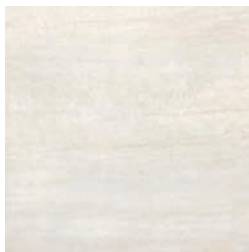
ALGR160 - Grigio
12" x 24"
Sq. Ft.: \$6.95 – Pc. \$13.55



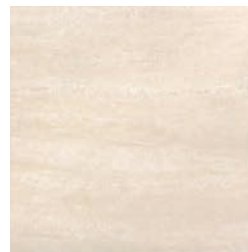
ALAR160 – Argento
12" x 24"
Sq. Ft.: \$6.95 – Pc. \$13.55



ALNE160 - Nero
12" x 24"
Sq. Ft.: \$6.95 – Pc. \$13.55



ALAL180 - Almond
24" X 24"
Sq. Ft.: \$7.95 – Pc. \$31.16



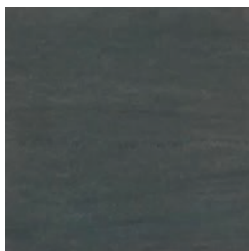
ALBE180 - Beige
24" X 24"
Sq. Ft.: \$7.95 – Pc. \$31.16



ALGR180 – Grigio
24" X 24"
Sq. Ft.: \$7.95 – Pc. \$31.16



ALAR180 - Argento
24" X 24"
Sq. Ft.: \$7.95 – Pc. \$31.16



ALNE180 - Nero
24" X 24"
Sq. Ft.: \$7.95 – Pc. \$31.16



juliantile.com/alps

12" x 24" packing: 8 pcs (15.60 sq.ft.) per carton, 1.95 sq.ft./pc. Weight: 5.88 lbs. each, 47.04 lbs. per carton.
24" x 24" packing: 4 pcs (15.68 sq.ft.) per carton, 3.92 sq.ft./pc. Weight: 13.25 lbs. each, 53 lbs. per carton.

It is recommended that all tile products and related materials be installed as per TTMAC Standards

