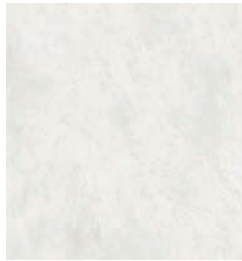
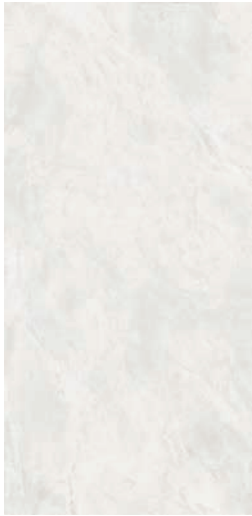


Juliantile / Charisma





CDA2448N
Dakota Natural
23.5 X 47.25
Sq.Ft: \$13.95 - Pc.: \$108.11

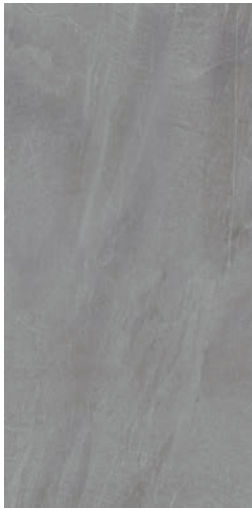
CDA24P
Dakota Polished
23.5 X 23.5
Sq.Ft.: \$12.95 - Pc.: \$50.12

CIM2448N
Imperial Natural
23.5 X 47.25
Sq.Ft: \$13.95 - Pc.: \$108.11

CIM24P
Imperial Polished
23.5 X 23.5
Sq.Ft.: \$12.95 - Pc.: \$50.12

CLU2448N
Luxor Natural
23.5 X 47.25
Sq.Ft: \$13.95 - Pc.: \$108.11

CLU24P
Luxor Polished
23.5 X 23.5
Sq.Ft.: \$12.95 - Pc.: \$50.12



CRO2448N
Rocky Natural
23.5 X 47.25
Sq.Ft: \$13.95 - Pc.: \$108.11

CRO24P
Rocky Polished
23.5 X 23.5
Sq.Ft.: \$12.95 - Pc.: \$50.12

CTR2448N
Trend Natural
23.5 X 47.25
Sq.Ft: \$13.95 - Pc.: \$108.11

CTR24P
Trend Polished
23.5 X 23.5
Sq.Ft.: \$12.95 - Pc.: \$50.12



juliantile.com/charisma

Product Sold By Carton

packing 23.5" x 23.5": 3 pcs (11.61 sq.ft.) per carton, 3.87 sq.ft. / pc. Weight: 16.65 lbs. each, 49.95 lbs. per carton

packing 23.5" x 47.25": 2 pcs (15.50 sq.ft.) per carton, 7.75 sq.ft. / pc. Weight: 34.41 lbs. each, 68.82 lbs. per carton

It is recommended that all tile products and related materials be installed as per TTMAC Standards

