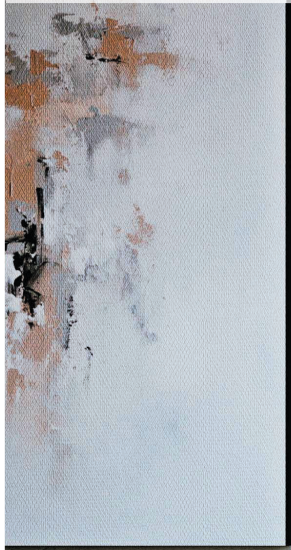


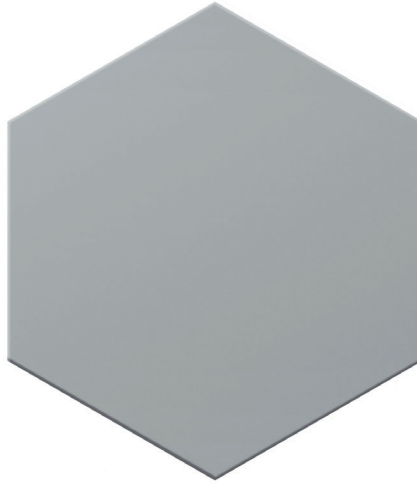
Juliantile / magic







TMAWHHEX - White  
8" X 9.5"  
Sq. Ft.: \$10.95 - Pc: \$4.93



TMASHEX - Silver  
8" X 9.5"  
Sq. Ft.: \$10.95 - Pc: \$4.93



TMAGRHEX - Grey  
8" X 9.5"  
Sq. Ft.: \$10.95 - Pc: \$4.93



TMABLHEX - Black  
8" X 9.5"  
Sq. Ft.: \$10.95 - Pc: \$4.93



[juliantile.com/magic](http://juliantile.com/magic)

**Product Sold By Carton**

Packing: 25 pcs ( 11.26 sq. ft.) per carton, 2.22 pcs/sq. ft. Weight: 1.54 lbs. each, 38.50 lbs. per carton.

**It is recommended that all tile products and related materials be installed as per TTMAC Standards**

Floor/Wall Tile



Frost Resist.



Dynamic Coeff. of Friction



Product of Spain

