

Juliantile / Venistone



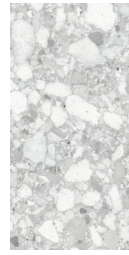




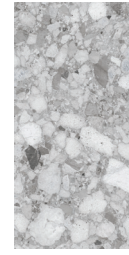
VSIV1224N - Ivory  
12" X 24" Natural  
Sq.Ft.: \$10.95 - Pc.: \$21.02



VSBE1224N - Beige  
12" X 24" Natural  
Sq.Ft.: \$10.95 - Pc.: \$21.02



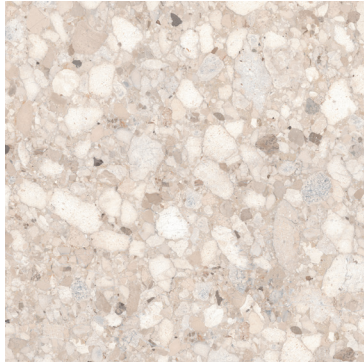
VSPE1224N - Pearl  
12" X 24" Natural  
Sq.Ft.: \$10.95 - Pc.: \$21.02



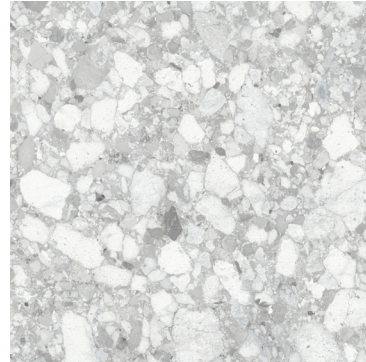
VSGR1224N - grey  
12" X 24" Natural  
Sq.Ft.: \$10.95 - Pc.: \$21.02



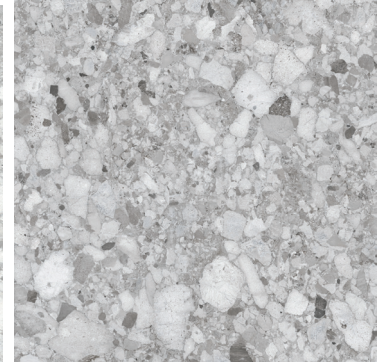
VSIV35N - Ivory  
35.25" X 35.25" Natural  
Sq.Ft.: \$13.95 - PC.: \$121.64



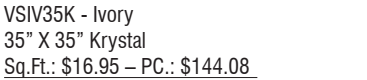
VSBE35N - Beige  
35.25" X 35.25" Natural  
Sq.Ft.: \$13.95 - PC.: \$121.64



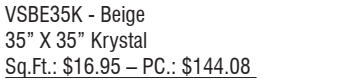
VSPE35N - Pearl  
35.25" X 35.25" Natural  
Sq.Ft.: \$13.95 - PC.: \$121.64



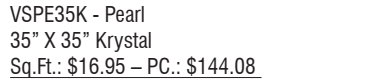
VSGR35N - Grey  
35.25" X 35.25" Natural  
Sq.Ft.: \$13.95 - PC.: \$121.64



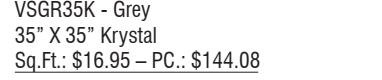
VSIV35K - Ivory  
35" X 35" Krystal  
Sq.Ft.: \$16.95 - PC.: \$144.08



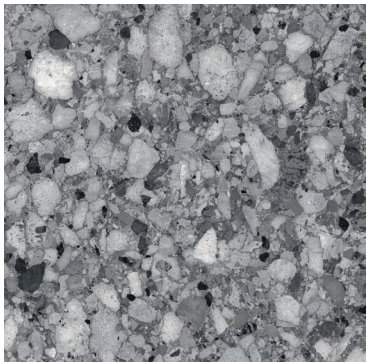
VSBE35K - Beige  
35" X 35" Krystal  
Sq.Ft.: \$16.95 - PC.: \$144.08



VSPE35K - Pearl  
35" X 35" Krystal  
Sq.Ft.: \$16.95 - PC.: \$144.08



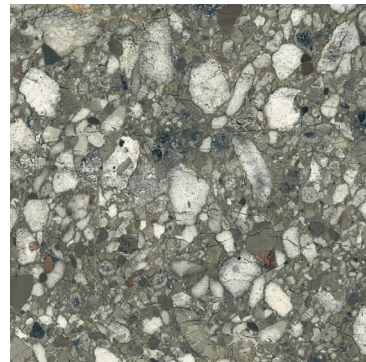
VSGR35K - Grey  
35" X 35" Krystal  
Sq.Ft.: \$16.95 - PC.: \$144.08



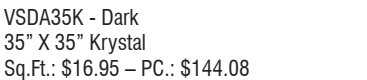
VSDA35N - Dark  
35.25" X 35.25" Natural  
Sq.Ft.: \$13.95 - PC.: \$121.64



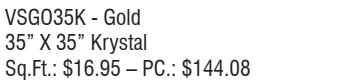
VSG035N - Gold  
35.25" X 35.25" Natural  
Sq.Ft.: \$13.95 - PC.: \$121.64



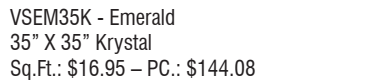
VSEM35N - Emerald  
35.25" X 35.25" Natural  
Sq.Ft.: \$13.95 - PC.: \$121.64



VSDA35K - Dark  
35" X 35" Krystal  
Sq.Ft.: \$16.95 - PC.: \$144.08



VSG035K - Gold  
35" X 35" Krystal  
Sq.Ft.: \$16.95 - PC.: \$144.08



VSEM35K - Emerald  
35" X 35" Krystal  
Sq.Ft.: \$16.95 - PC.: \$144.08

**Product Sold By Carton**

12 x 24 Natural Packing: 7 pcs (13.44 sq. ft.) per carton, 1.92 sq. ft./pc. Weight: 8.02 lbs. each, 56.14 lbs. per carton.  
35.25" X 35.25" Natural Packing: 2 pcs (17.44 sq. ft.) per carton, 8.72 sq. ft./pc. Weight: 36.30 lbs. each, 72.60 lbs. per carton.  
35 x 35 Krystal Packing: 2 pcs (17 sq. ft.) per carton, 8.50 sq. ft./pc. Weight: 37.40 lbs. each, 74.80 lbs. per carton.

**It is recommended that all tile products and related materials be installed as per TTMAC Standards**



juliantile.com/venistone

Floor/Wall Tile



Frost Resistant



Environment Policy



Rectified



Water Absorption



PEI



Dynamic Coeff. of Friction



Shade Variation



Product of Italy

