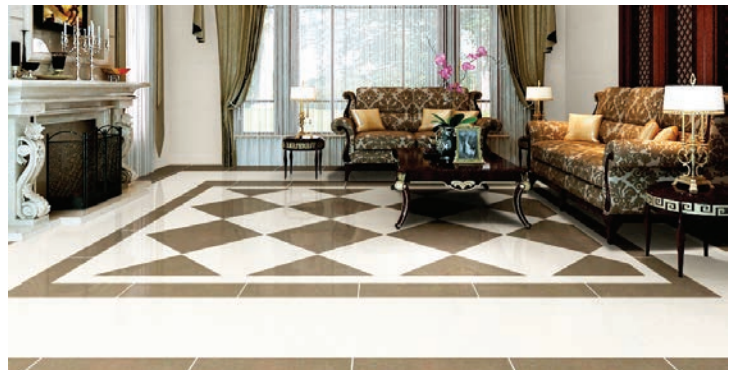
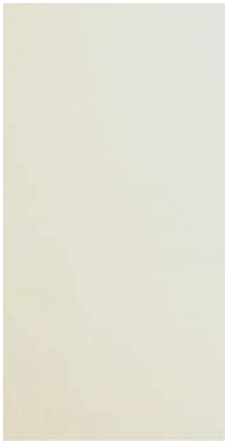


Juliantile / Apollo

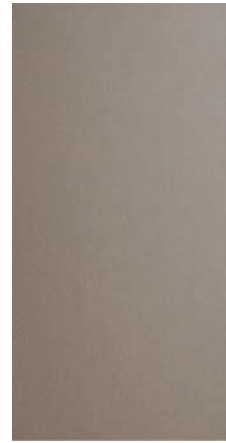




ACRV6301 - Crema - Rough
12" x 23.75"
Sq. Ft.: \$6.95 – Pc.: \$13.76



ACRV6302 - Taupe - Polished
12" x 23.75"
Sq. Ft.: \$6.95 – Pc.: \$13.76



ACRV6306 – Mocha - Polished
12" x 23.75"
Sq. Ft.: \$6.95 – Pc.: \$13.76

ACRV6302 - Taupe - Rough
12" x 23.75"
Sq. Ft.: \$6.95 – Pc.: \$13.76

ACRV6306 – Mocha - Rough
12" x 23.75"
Sq. Ft.: \$6.95 – Pc.: \$13.76



ACRV6309 - Grey - Rough
12" x 23.75"
Sq. Ft.: \$6.95 – Pc.: \$13.76



ACRV6308 - Ash - Rough
12" x 23.75"
Sq. Ft.: \$6.95 – Pc.: \$13.76



juliantile.com/apollo

12" x 23.75 (natural/rough) packing: 6 pcs. (11.88 sq.ft.) per carton, 1.98 sq.ft./pc. Weight: 9.33 lbs. each, 55.98 lbs. per carton.
12" x 23.75 (polished) packing: 6 pcs. (11.88 sq.ft.) per carton, 1.98 sq.ft./pc. Weight: 8.56 lbs. each, 51.36 lbs. per carton.

It is recommended that all tile products and related materials be installed as per TTMAC Standards

